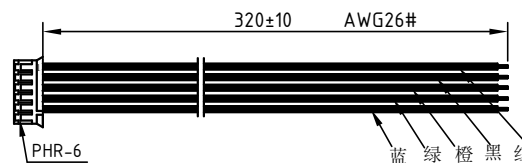
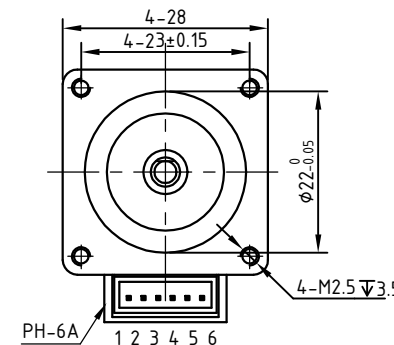
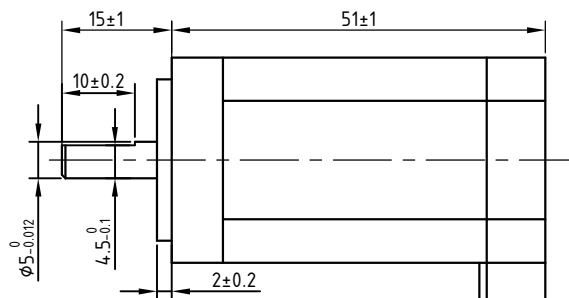
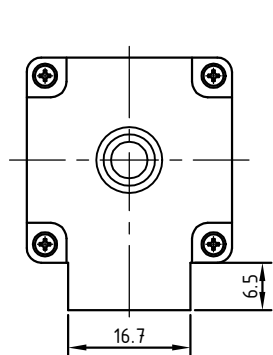


尺寸/Dimensions 单位/Unit=mm

RoHS
COMPLIANT

CE

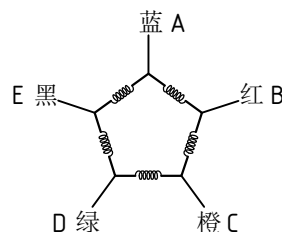
28CM012 V2.0



电动机规格书/Motor Specification

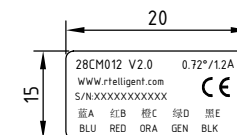
相数/Number Of Phase	5
基本步距角/Basic Step Angle	0.72°
基本步距角误差(空载)/Positional Accuracy(no-load)	±0.05°以下/Max
额定电流(相)/Rated Current(Phase)	1.2A
电阻(相)/Resistance(Phase)@20°C	1.1Ω±15%
电感(相)/Inductance(Phase)@1KHz	0.6mH±20%
保持力矩/Holding Torque	0.12N·m
转子惯量/Rotor inertia	≈0.012g·cm ²
质量/Mass	0.2Kg
径向跳动(最大)/Radial Play(Max)	0.025mm(Load/负载 450g)
轴向跳动(最大)/Axial Play(Max)	0.075mm(Load/负载 920g)
额定工作状态/Duty	连续/Continuous
绝缘耐压/Dielectric Strength	500V A.C
绝缘电阻/Insulation Resistance	100MΩ Min/500VDC
绝缘等级(UL)/Insulation Class(UL)	B
温升/Temperature Rise	80K以下/Max
使用温度范围/Operation Ambient Temperature	0°C~+50°C
使用湿度范围/Operation Ambient Humidity	20%RH~90%RH
保存温度范围/Storage Ambient Temperature	-20°C~+70°C
保存湿度范围/Storage Ambient Humidity	15%RH~95%RH

接线图/Wiring Diagram



励磁顺序 (5相励磁)
Phase Sequence(2 Phase Exciting)

铭牌内容/Label Discription



第一角画法
First Angle View

批准 Approved		材料 Material	
审核 Checked		表面处理 Finish	
设计 Designed	SHH	公差 Tolerance	±0.2
客户		NO.	
设计 Designed	日期 Date	比例 Scale	1:1
初版/First Edition	变更内容 Revisions	NO.	1/1
版本 Edition		页 Sheet	1/1